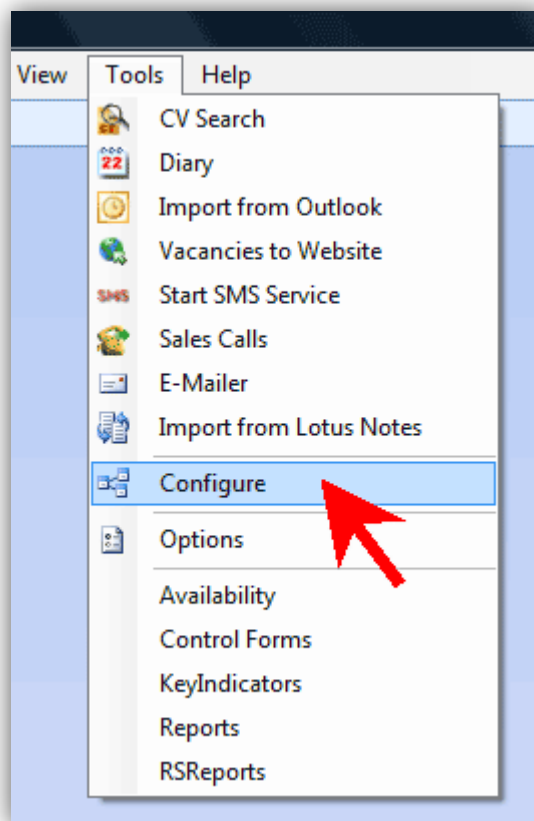


How do I turn on Recruit Studio add-ins?

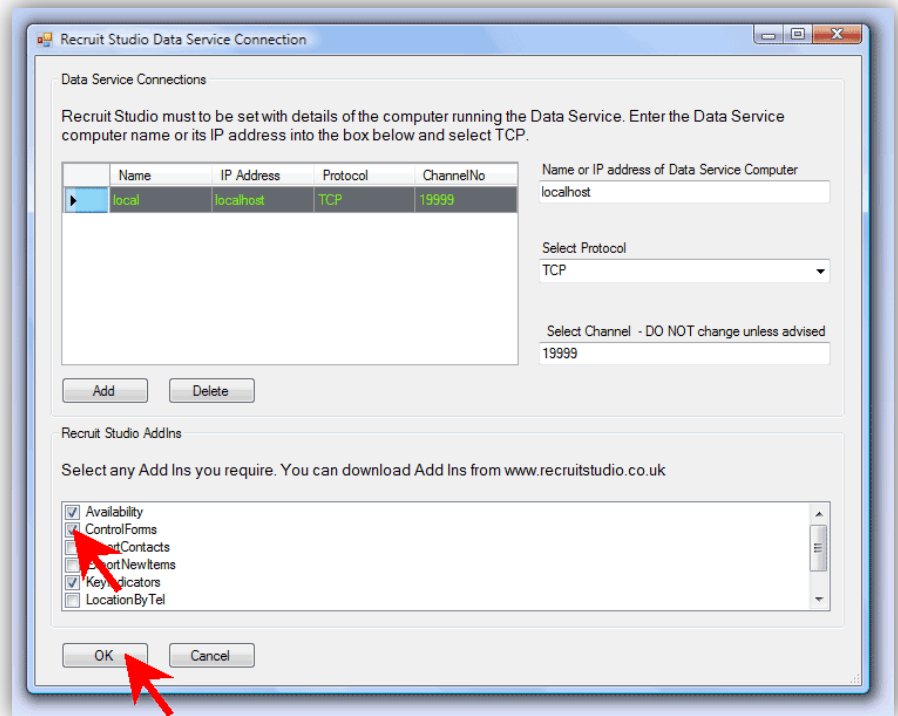
In addition to the regular program, Recruit Studio offers a series of add-ins at no extra cost. These cover a wide range of extras such as reporting, tools for temp recruitment, availability searching, and various export functions.

Any Recruit Studio user can have the add-ins installed, you just need to install the add-ins and configure them.

1. Close Recruit Studio.
2. Download and install the add-ins from [our website](#)
3. When the installation has finished, open Recruit Studio.
4. Go to the Tools menu and select 'Configure'.



5. In the lower part of the window, tick the add-ins you require – you will be told which ones to select – and click 'OK'.



6. Recruit Studio will close and when you re-open it, the add-ins will be available on the Tools menu. Click on one to open it.

